



Fire Alarm Systems
Product Catalog

P POTTER
The Symbol of Protection

OLL School
All Systems Normal
12/28 10:26:01AM

POWER ALARM
EARTH FAULT SUPERVISORY
SILENCED TROUBLE

SILENCE RESET

1) 2) 3)

4) 5) 6)

7) 8) 9)

ACK DRILL

ENTER 0) ESC

Navigation arrows

P POTTER
The Symbol of Protection

A different kind of
fire alarm company.

Potter Fire: We stand apart.

When it comes to fire protection companies, Potter stands apart. Apart from the competition and apart from the constraints of a large corporate mentality. Potter is the only independent manufacturer with a full line of fire alarm systems.

We have been a leader in fire protection since 1898. As a privately held business, Potter is able to quickly respond and react to our customers' needs and provide the individual attention and service that each of our customers deserve. Potter's reputation for quality and service has been the catalyst towards our focus for the design, development, and manufacture of the highest quality and most reliable life safety products available today.

This is the reason Potter provides an industry leading 5-year warranty on all major products.

With this new line of fire panels and our full complement of modules, detectors, and notification devices, we begin a new era in the fire alarm industry. As an independent manufacturer with a full line, we know you'll find it easy to do business with us. Give us a call, send us an email, or visit our website. We look forward to serving you!

☎ 800-325-3936

✉ sales@pottersignal.com

🌐 www.pottersignal.com





IP Connectivity

With today's ever-expanding means of communication, it's important to be able to incorporate the same technology into your fire control system. We took this technology into account when we designed the Smart Notifications functionality within our new panels. The built-in email capabilities allow events to be sent as they occur. The easy-to-

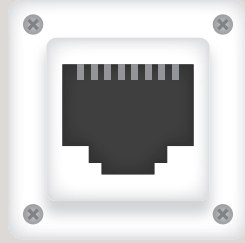
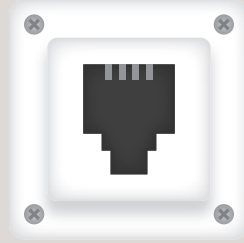
use system software can be quickly updated via a networked computer. Receive updates on your cell phone so you always know what's going on with your panels, whenever and wherever you are.





Communication Options

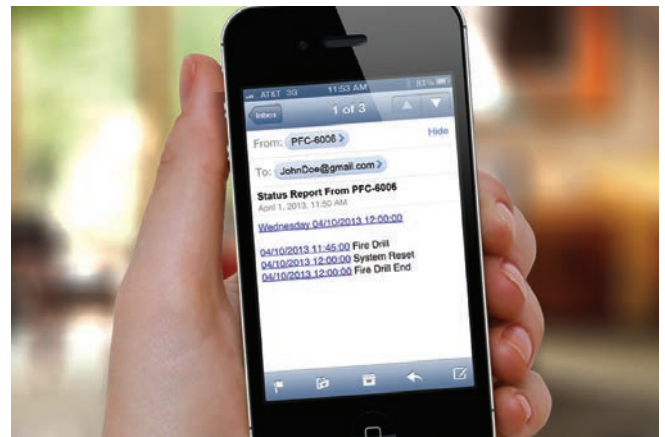
Potter's PFC-6000 Series fire alarm control panels are capable of both IP and phone line communication to central station. The PFC-6006 Sprinkler Monitoring Panel complies with new NFPA 72 2013 code by providing both out of the box.



Email & Reminders

The PFC-6000 Series panels are email ready. History and Detector Status reports can be sent on demand as either a text or Excel® file for a professional look. The status events of the panel can be immediately emailed allowing users to be proactive in servicing customers.

Reports and the configuration file can be requested from the panel at any time by sending an email directly to the panel. Additionally, enhance your business by creating email reminders for your customers to schedule system tests or even to purchase new batteries.



Communication Over IP

The world of communication in fire alarm is changing. The installation of POTs lines is being replaced by more reliable and faster communicating IP connections to monitoring stations.

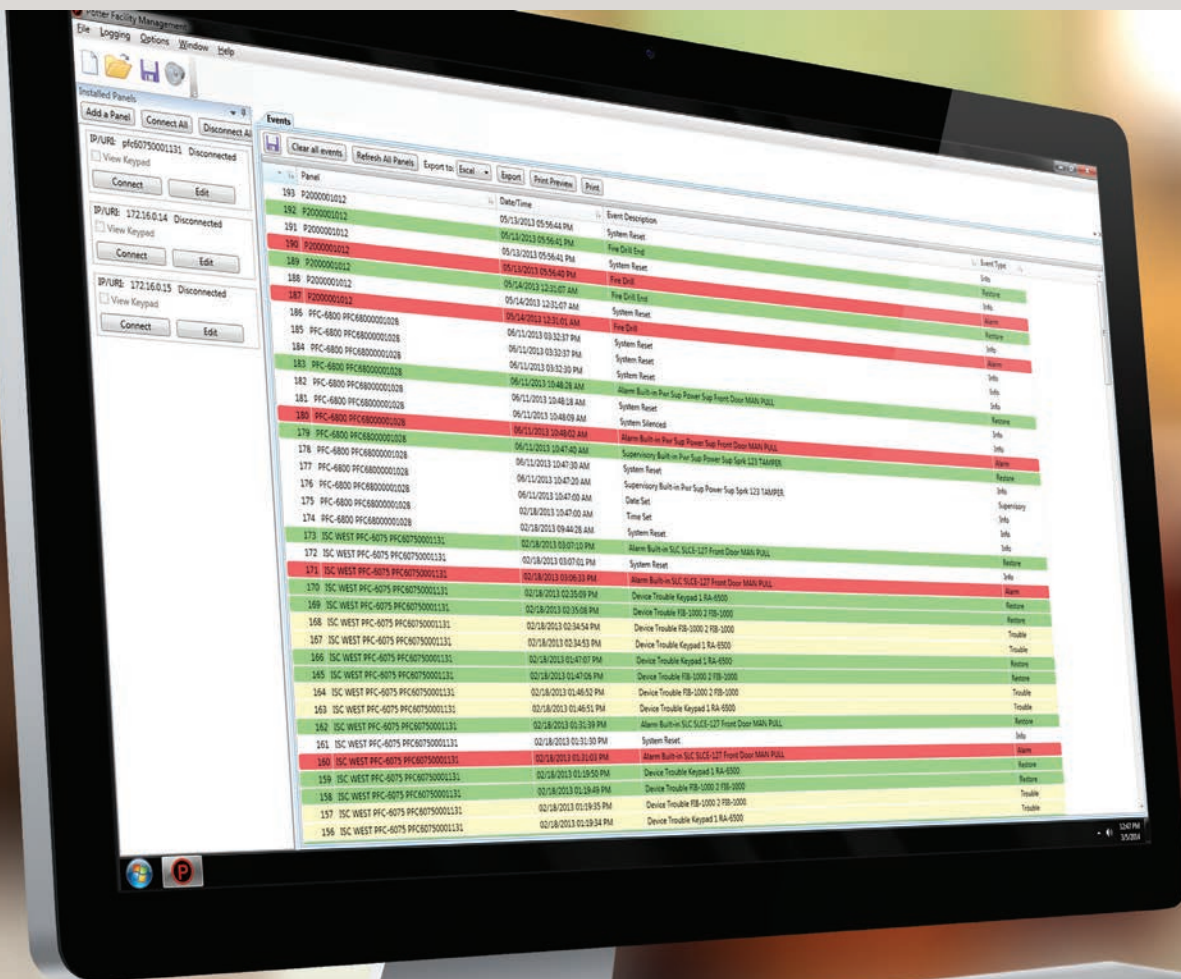
Every PFC-6000 Series fire panel has an on board IP communicator that is listed to communicate with the SurGard III IP receiver. The system allows for multiple communication paths without requiring additional expensive hardware and connections.



Facility Management

Would you like to know what's happening on your Potter fire alarm control panels from a single location? Potter's Facility Management software is compatible with all Potter PFC-6000 Series fire panels and displays real-time events that occur on one or more panels connected to the same network.

It offers great flexibility in how event information may be used to efficiently organize, manage and analyze panel performance. The Facility Management software allows the user to see alarm events, trouble conditions, and much more. Events can even be filtered to create custom data files which can be exported to Word® or Excel®.





Free Download

For a limited time, receive Potter's Facility Management software absolutely free!

To learn more and to download, scan the QR code or visit:

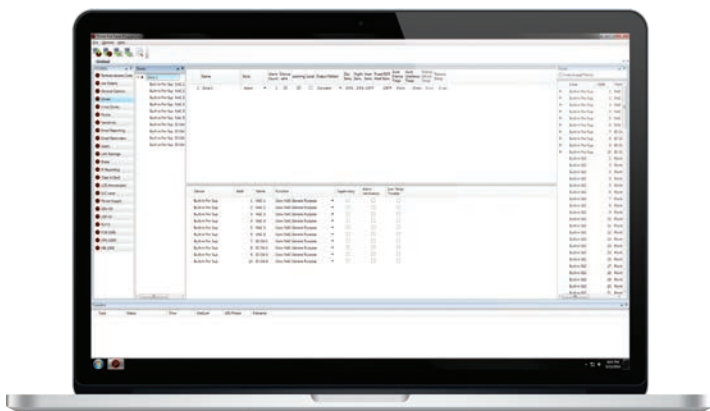
www.pottersignal.com/FMtool



Panel Programming

The PFC-6000 Series fire panels have the ability to connect to a Local or Wide Area Network (LAN or WAN) and obtain an IP address. Once connected, the panel configuration software allows custom programming and configuration for all points using the network or a stand-alone computer.

We have designed our programming software to be simple yet robust. At the click of a mouse, you can fine-tune device behavior characteristics or create mapping zones for a more sophisticated fire protection system. All this is bundled in an easy-to-use drag and drop interface.





Training Opportunities

Potter provides unmatched education and training opportunities on our full line of fire alarm systems. With multiple ways to receive training, you choose your preferred method. Webinars on panel hardware, software, and network / communications will bring you up to speed on our

industry-leading technology. Training videos are available to be completed on your time with optional factory certification. Additionally, live training seminars are provided for advanced training in the PFC series installation and programming.

Live Training

Potter's comprehensive two-day course covers the PFC Series fire panels and programming in depth. Each trainee will receive training on topics such as panel and device installation, SLC addressing, panel communication technologies (IP, Dialer, GSM), TCP/IP networking, email capabilities, and much more. Software examples include elevator recall, zone programming, user management, device sensitivity, and more.

Classes can be registered online with a variety of dates and locations. Each attendee will receive factory certification on the PFC-6030, 6075, 6200, and 6800 fire alarm control panels. Upon completion you will have the tools to successfully install, program and start-up a PFC Series fire alarm system.

Webinars

Potter provides distance learning with a live trainer on a variety of topics. All webinars are completely free of charge and have multiple dates and times for anyone's schedule. Topics include PFC-6000 fire panels and software, PFC-8500 fire panels and software, network & IP communications, and ask the trainer sessions.

Hardware, software, and networking webinars last approximately 2 hours. Topics covered vary by class but may include panel connections and installation, keypad interface, programming, SLC addressing, software applications, and more.

Ask the trainer sessions last approximately 30 minutes and allow attendees to participate in an interactive Q&A with a live trainer.





Get Training Today

Potter offers a variety of ways to receive training on our full line of fire alarm systems.

To get started, scan the QR code or visit:
www.pottersignal.com/training

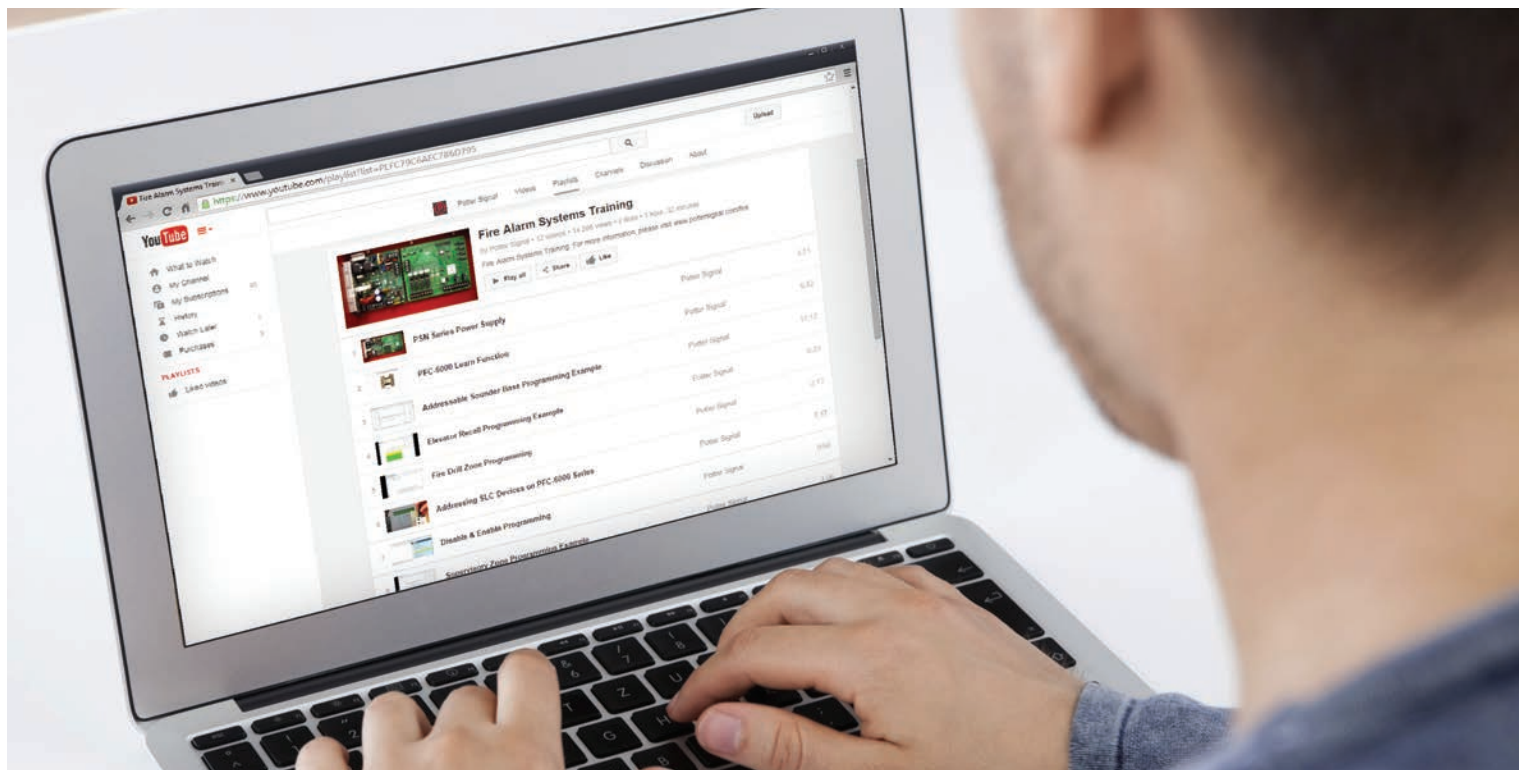


Training Videos

In addition to live training and webinars, Potter also provides video training that can be completed on your own time, anytime. A wide range of training topics are available including PFC-Series system hardware and software.

Online Certification

Potter offers online certification for the PFC-6000 Series fire alarm panels that can be completed on your time. A series of hardware and software video modules provides in-depth training on a variety of topics. Upon completion of the video training, a certification exam can be taken to receive PFC-6000 Certification.





Email Capabilities

Email reminders, event history, and even configuration files can be sent from the panel to 20 separate email addresses.

PFC-6000 Series Fire Panels

Model #	Description	Stock #
PFC-6800	127 Expandable to 1,016 Point Addressable FACP	3992655
PFC-6200	127 Expandable to 254 Point Addressable FACP	3992654
PFC-6075	75 Point Addressable FACP	3006468
PFC-6030	30 Point Addressable FACP	3006457



PFC-6800

127 up to 1,016 Points*
6 NACs
10A Power
4 I/O Circuits
160 Character LCD

PFC-6200

127 up to 254 Points*
2 NACs
5A Power
2 I/O Circuits
160 Character LCD

PFC-6075

75 Points
2 NACs
5A Power
2 I/O Circuits
32 Character LCD

PFC-6030

30 Points
2 NACs
3.5A Power
-
32 Character LCD

All PFC-6000 Series addressable fire alarm control panels include a built-in UL Listed sole path IP communicator for communication to primary central station.

**With the addition of SLCE-127 expansion cards. PFC-6800 supports 7 total cards, PFC-6200 supports 1.*

Panel Connections



NAC Circuit



SLC Loop



IP Connectivity



P-Link Circuit

To Central Station

Facility Management Software



WAN



LAN

P-Link can span up to 6500' between each fire panel and power supply. Greater distances can be achieved with the FIB-1000 and fiber optic cabling.



Intelligent Power Supplies

Model #	Description	Stock #
PSN-1000E	10 amps (6 NACs rated at 3 amps each) with Expandable Cabinet	3992665
PSN-1000	10 amps (6 NACs rated at 3 amps each)	3992662



Intelligent P-Link Circuit

The PSN-1000(E) power supply connects to the system on the P-Link circuit. This P-Link connection allows individual control of each of the PSN-1000(E) circuits.



Conventional Power Supplies

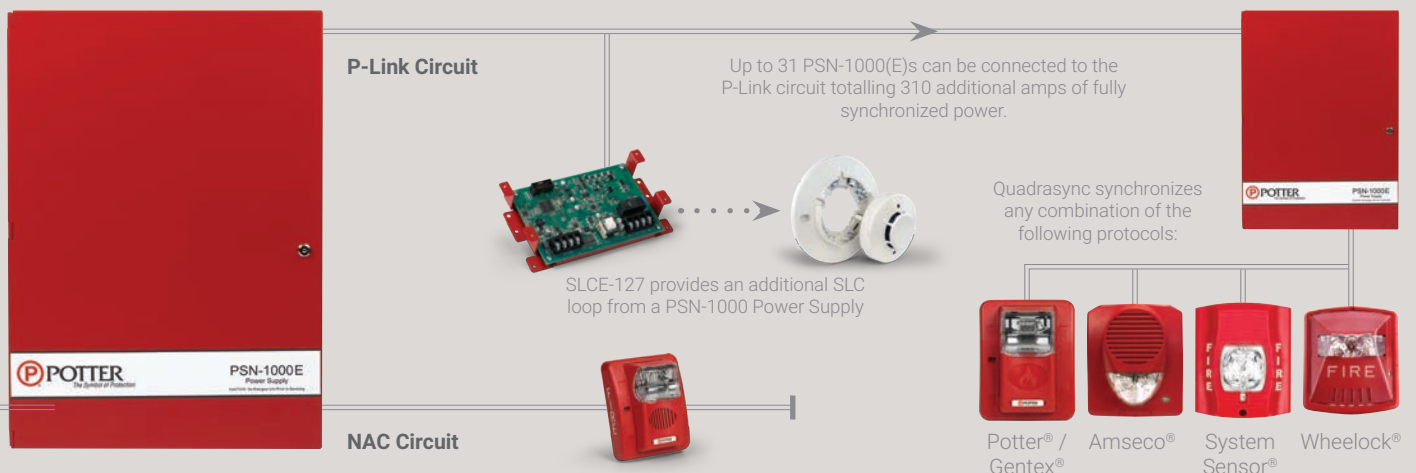
Model #	Description	Stock #
PSN-106	10 amps with 6 Outputs	3006437
PSN-64	6 amps with 4 Outputs	3006436
PSB-10	10 amp Bulk Power Supply	3006435



Quadrasync

All PFC-6000 addressable fire panels and all PSN series power supplies support Quadrasync, synchronizing any combination of the Potter® / Gentex®, Amseco®, System Sensor®, and Wheelock® protocols.

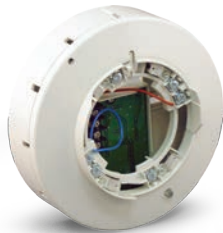
Full panel connection diagram at back of catalog.





Addressable Detectors

Model #	Description	Stock #
PSA	Photoelectric Smoke Detector	1430800
PSHA	Photoelectric Smoke/Heat Detector	1430801
FHA	Fixed Temperature Heat Detector	1430803
RHA	Rate of Rise Heat Detector	1430804
DDA	Addressable Duct Detector	1430812



Addressable Bases

Model #	Description	Stock #
AB-4	4 Inch Addressable Base	1430805
AB-6	6 Inch Addressable Base	1430806
AIB	Addressable Isolator Base	1430807
ASB	Addressable Sounder Base	1430809
ARB	Addressable Relay Base	1430808



Addressable Modules

Model #	Description	Stock #
MCM	Miniature Contact Module	1430820
SMC-4	Single Contact Module	1430821
DCM-4	Dual Contact Module	1430822
CIZM-4	Conventional Initiating Zone Module	1430823
TRM-4	Twin Relay Module	1430824
MOM-4	Monitored Output Module	1430825
SCI	Short Circuit Isolator	1430826



Addressable Pull Stations

Model #	Description	Stock #
APS-SA	Single Action Addressable Pull Station	1430810
APS-DA	Dual Action Addressable Pull Station	1430811



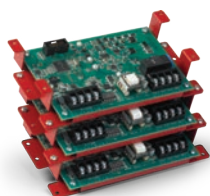
Expansion Cards

Model #	Description	Stock #
CA-6075	Class A Expander for PFC-6030, PFC-6075, PFC-6200	3006459
CA-6500	Class A Expander for PFC-6800	3992663
UD-1000	Digital Alarm Communicator Transmitter	3006465



P-Link Expansion Cards

Model #	Description	Stock #
FIB-1000	Fiber Interface Module	3992671
SPG-1000	Serial Parallel Gateway	3992670
FCB-1000	Fire Communication Bridge	3992669
DRV-50	LED Driver Expander	3992668
RLY-5	Relay Contact Expander	3992667
SLCE-127	SLC Loop Expander	3992664



Potter's Stacker Bracket

Potter's unique stacker bracket assembly allows for multiple P-Link expansion cards to be placed in a smaller area, multiplying the capabilities of your system.



SLC Loop Expansion

Each optional SLCE-127 P-Link expansion card can provide an additional 127 addressable points to the PFC-6200 and PFC-6800 fire panel systems.



Rack Mount P-Link Expansion Cards

Model #	Description	Stock #
FIB-1000RM	Rack Mount Fiber Interface Module	3992674
SPG-1000RM	Rack Mount Serial Parallel Gateway	3992673
FCB-1000RM	Rack Mount Fire Communication Bridge	3992672



Rack Mount Enclosures

Some P-Link expansions cards come in an optional rack mount configuration. This allows them to be installed inline with your building's existing network equipment.



Remote Annunciators

Model #	Description	Stock #
RA-6500	160 Character LCD Annunciator	3992660
RA-6075	32 Character LCD Annunciator	3006458
LED-16	LED Annunciator	3992666



Mini Horns

Model #	Description	Stock #
MH-12/24R	Mini Horn - Red	4560041
MH-12/24TR	Mini Horn with Terminal - Red	4560043
MH-12/24W	Mini Horn - White	4560042
MH-12/24TW	Mini Horn with Terminal - White	4560044
MHT-1224R	Temporal Mini Horn - Red	4890001
MHT-1224W	Temporal Mini Horn - White	4890002

**Plain Bodies Available*



Electronic Horns

Model #	Description	Stock #
EH-24R	Electronic Horn - Red	4890005
EH-24W	Electronic Horn - White	4890006

**Plain Bodies Available*



Wall Mount Strobes & Horn Strobes

Model #	Description	Stock #
S-24WR	Selectable Candela Strobe - Red	4890010
S-24WW	Selectable Candela Strobe - White	4890011
S24-177R	High Candela Strobe - Red	4890014
S24-177W	High Candela Strobe - White	4890015
HS-24WR	Selectable Candela Horn Strobe - Red	4890030
HS-24WW	Selectable Candela Horn Strobe - White	4890033
HS24-177R	High Candela Horn Strobe - Red	4890034
HS24-177W	High Candela Horn Strobe - White	4890035

**Plain Bodies Available*



Ceiling Mount Strobes & Horn Strobes

Model #	Description	Stock #
CS-24R	Selectable Candela Strobe - Red	4890020
CS-24W	Selectable Candela Strobe - White	4890021
CHS-24R	Selectable Candela Horn Strobe - Red	4890040
CHS-24W	Selectable Candela Horn Strobe - White	4890041

**Plain Bodies Available*

We speak your language.

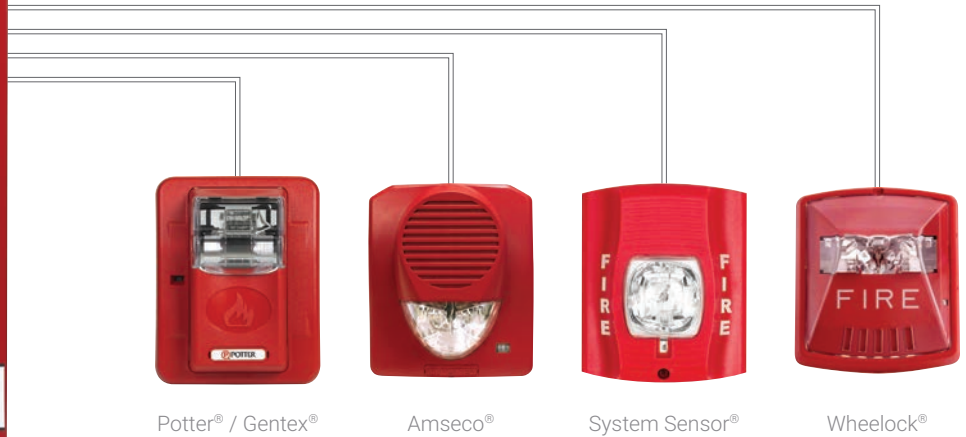
Quadrasync

Our patented Quadrasync technology allows four different brands of strobes to be synced together using one PFC-6000 Series fire panel or PSN Series power supply. There is no need for the panel and devices

to utilize the same protocol, making this technology a great feature for retrofit applications. Quadrasync works with the Potter® / Gentex®, Amseco®, System Sensor®, and Wheelock® protocols.



NAC Circuits



Potter® / Gentex®

Amseco®

System Sensor®

Wheelock®



Colored Lens Wall Mount Strobes & Horn Strobes

Model #	Description	Stock #
CS-24WAR	Selectable Candela Strobe - Red with Amber Strobe	4890100
CS-24WAW	Selectable Candela Strobe - White with Amber Strobe	4890101
CS-24WBR	Selectable Candela Strobe - Red with Blue Strobe	4890102
CS-24WBW	Selectable Candela Strobe - White with Blue Strobe	4890103
CS-24WGR	Selectable Candela Strobe - Red with Green Strobe	4890104
CS-24WGW	Selectable Candela Strobe - White with Green Strobe	4890105
CS-24WRR	Selectable Candela Strobe - Red with Red Strobe	4890106
CS-24WRW	Selectable Candela Strobe- White with Red Strobe	4890107
CHS-24WAR	Selectable Candela Horn Strobe - Red with Amber Strobe	4890120
CHS-24WAW	Selectable Candela Horn Strobe - White with Amber Strobe	4890121
CHS-24WBR	Selectable Candela Horn Strobe - Red with Blue Strobe	4890122
CHS-24WBW	Selectable Candela Horn Strobe - White with Blue Strobe	4890123
CHS-24WGR	Selectable Candela Horn Strobe - Red with Green Strobe	4890124
CHS-24WGW	Selectable Candela Horn Strobe - White with Green Strobe	4890125
CHS-24WRR	Selectable Candela Horn Strobe - Red with Red Strobe	4890126
CHS-24WRW	Selectable Candela Horn Strobe- White with Red Strobe	4890127



Colored Lens Ceiling Mount Strobes & Horn Strobes

Model #	Description	Stock #
CCS-24WAR	Selectable Candela Strobe - Red with Amber Strobe	4890108
CCS-24WAW	Selectable Candela Strobe - White with Amber Strobe	4890109
CCS-24WBR	Selectable Candela Strobe - Red with Blue Strobe	4890110
CCS-24WBW	Selectable Candela Strobe - White with Blue Strobe	4890111
CCS-24WGR	Selectable Candela Strobe - Red with Green Strobe	4890112
CCS-24WGW	Selectable Candela Strobe - White with Green Strobe	4890113
CCS-24WRR	Selectable Candela Strobe - Red with Red Strobe	4890114
CCS-24WRW	Selectable Candela Strobe- White with Red Strobe	4890115
CCHS-24WAR	Selectable Candela Horn Strobe - Red with Amber Strobe	4890128
CCHS-24WAW	Selectable Candela Horn Strobe - White with Amber Strobe	4890129
CCHS-24WBR	Selectable Candela Horn Strobe - Red with Blue Strobe	4890130
CCHS-24WBW	Selectable Candela Horn Strobe - White with Blue Strobe	4890131
CCHS-24WGR	Selectable Candela Horn Strobe - Red with Green Strobe	4890132
CCHS-24WGW	Selectable Candela Horn Strobe - White with Green Strobe	4890133
CCHS-24WRR	Selectable Candela Horn Strobe - Red with Red Strobe	4890134
CCHS-24WRW	Selectable Candela Horn Strobe- White with Red Strobe	4890135



Weatherproof Strobes & Horn Strobes

Model #	Description	Stock #
S-24WR-WP	Selectable Candela Strobe - Red	4890050
S-24WW-WP	Selectable Candela Strobe - White	4890051
HS-24WR-WP	Selectable Candela Horn Strobe - Red	4890060
HS-24WW-WP	Selectable Candela Horn Strobe - White	4890061

**Low Profile Covers Available*



Weatherproof Colored Lens Strobes & Horn Strobes

Model #	Description	Stock #
CS-24WAR-WP	Selectable Candela Strobe - Red with Amber Strobe	4890140
CS-24WAW-WP	Selectable Candela Strobe - White with Amber Strobe	4890141
CS-24WBR-WP	Selectable Candela Strobe - Red with Blue Strobe	4890142
CS-24WBW-WP	Selectable Candela Strobe - White with Blue Strobe	4890143
CS-24WGR-WP	Selectable Candela Strobe - Red with Green Strobe	4890144
CS-24WGW-WP	Selectable Candela Strobe - White with Green Strobe	4890145
CS-24WRR-WP	Selectable Candela Strobe - Red with Red Strobe	4890146
CS-24WRW-WP	Selectable Candela Strobe- White with Red Strobe	4890147
CHS-24WAR-WP	Selectable Candela Horn Strobe - Red with Amber Strobe	4890160
CHS-24WAW-WP	Selectable Candela Horn Strobe - White with Amber Strobe	4890161
CHS-24WBR-WP	Selectable Candela Horn Strobe - Red with Blue Strobe	4890162
CHS-24WBW-WP	Selectable Candela Horn Strobe - White with Blue Strobe	4890163
CHS-24WGR-WP	Selectable Candela Horn Strobe - Red with Green Strobe	4890164
CHS-24WGW-WP	Selectable Candela Horn Strobe - White with Green Strobe	4890165
CHS-24WRR-WP	Selectable Candela Horn Strobe - Red with Red Strobe	4890166
CHS-24WRW-WP	Selectable Candela Horn Strobe- White with Red Strobe	4890167

**Low Profile Covers Available*



Speakers

Model #	Description	Stock #
FASPKR-R	Wall or Ceiling Speaker - Red	4890200
FASPKR-W	Wall or Ceiling Speaker - White	4890201

**Plain Bodies Available*



Wall Mount Speaker Strobes

Model #	Description	Stock #
SPKSTR-24WLPR	Selectable Candela Speaker Strobe - Red	4890210
SPKSTR-24WLPW	Selectable Candela Speaker Strobe - White	4890211

**Plain Bodies Available*



Ceiling Mount Speaker Strobes

Model #	Description	Stock #
SPKSTR-24CLPR	Selectable Candela Speaker Strobe - Red	4890220
SPKSTR-24CLPW	Selectable Candela Speaker Strobe - White	4890221

**Plain Bodies Available*



Colored Lens Wall Mount Speaker Strobes

Model #	Description	Stock #
CSPKSTR-24AR	Selectable Candela Speaker Strobe - Red with Amber Lens	4890230
CSPKSTR-24AW	Selectable Candela Speaker Strobe - White with Amber Lens	4890231
CSPKSTR-24BR	Selectable Candela Speaker Strobe - Red with Blue Lens	4890232
CSPKSTR-24BW	Selectable Candela Speaker Strobe - White with Blue Lens	4890233
CSPKSTR-24GR	Selectable Candela Speaker Strobe - Red with Green Lens	4890234
CSPKSTR-24GW	Selectable Candela Speaker Strobe - White with Green Lens	4890235
CSPKSTR-24RR	Selectable Candela Speaker Strobe - Red with Red Lens	4890236
CSPKSTR-24RW	Selectable Candela Speaker Strobe - White with Red Lens	4890237



AC Powered Bells

Model #	Description	Stock #
PBA-12010-C	120 VAC 10" Bell with Sign Bracket	1700002
PBA-12010	120 VAC 10" Bell	1810120
PBA-1208	120 VAC 8" Bell	1808120
PBA-1206	120 VAC 6" Bell	1806120
PBA-2410	24 VAC 10" Bell	1810024
PBA-2408	24 VAC 8" Bell	1808024
PBA-2406	24 VAC 6" Bell	1806024



DC Powered Bells

Model #	Description	Stock #
MBA-1024	24 VDC 10" Bell	1750090
MBA-824	24 VDC 8" Bell	1750110
MBA-624	24 VDC 6" Bell	1750100
MBA-1012	12 VDC 10" Bell	1750060
MBA-812	12 VDC 8" Bell	1750080
MBA-612	12 VDC 6" Bell	1750070



Bell Back Boxes

Model #	Description	Stock #
BBK-1	Weatherproof Bell Back Box	1500001
BBX-1	Weatherproof Deep Bell Back Box	4270024



High Rise Evacuation System

Model #	Description	Stock #
PVC-MP	High Rise Evacuation Master Panel	Options*
PVC-DP	High Rise Evacuation Distribution Panel	Options*

**Multiple sizing options available, call for information.*



Voice Evacuation Control Panels

Model #	Description	Stock #
PVX-25	25W Voice Panel	Options*
PVX-50	50W Voice Panel	Options*
PVX-100	100W Voice Panel	Options*
PVX-150	150W Voice Panel	Options*
PVX-200	200W Voice Panel	Options*
PVE-802	Dual 40W Voice Panel with 2 Class A or B Speaker Circuits	3530001
VAB-802	Audio Booster	3530002

**Multiple sizing options available, call for information.*



Voice Evacuation Accessories

Model #	Description	Stock #
PVC-WS	Warden Station	3520604
PVC-FH	Portable Handset	3520601
PVC-FJ	Fireman Phone Jack	3520600



Sprinkler Monitoring Panel

Model #	Description	Stock #
PFC-6006	Conventional Sprinkler Monitoring Fire Panel	3992334



Sprinkler Monitoring Applications

Panels designed for sprinkler monitoring applications are virtually nonexistent. DACT only dialers are severely limited and a traditional fire alarm panel with a DACT is overkill and costly. Potter's new Sprinkler Monitoring Panel is ideally suited to cost effectively monitor a fire sprinkler system.

- Built-in dual line DACT and sole path IP Communicator
- Email events & service reminders
- 6 Zones: 1 Class A/B, 5 Class B
- 0.5 amp NAC circuit & 0.5 amp auxiliary power
- Listed for use with 2 wire smoke detectors
- Potter® / Gentex®, AMSECO®, System Sensor®, and Cooper Wheelock® strobe synchronization



Sprinkler Flow Switches

Model #	Description	Stock #
VSR	Waterflow Alarm Switch with Retard	1144402
VSR-S	Waterflow Alarm Switch with Retard for Small Pipe	1144440
VSR-SG	Waterflow Alarm Switch with Union	1144460

**Additional models available.*



Sprinkler Pressure Switches

Model #	Description	Stock #
PS10	Pressure Type Waterflow Alarm Switch	1340103
PS40	High/Low Supervisory Pressure Switch	1340403
WFSR-F	Waterflow Pressure Switch for Alarm Valves	1010080

**Additional models available.*



Sprinkler Tamper Switches

Model #	Description	Stock #
OSYSU	Outside Screw & Yoke Valve Supervisory Switch	1010106
PCVS	Control Valve Supervisory Switch	1010107
RBVS	Retrofit Ball Valve Switch	1000040

**Additional models available.*



Conventional Fire Panels

Model #	Description	Stock #
PFC-5004E	4 expandable to 8 Zone Microprocessor Based Fire Panel	3992020
PFC-5008 D	8 Zone with Built-in 2-Line Digital Communicator	3992175
PFC-5008	8 Zone Fire Panel	3992275
PC Assembly	PC Board Assembly for PFC-5004E & PFC-5008	3992021



Conventional Fire Panel Accessories

Model #	Description	Stock #
RA8F W	8 Zone LED Annunciator - White	3002275
RA8F R	8 Zone LED Annunciator - Red	3002135
ZA-42	4 Zone 2 Signal Adder Card	3002115
ARM-4	4 Adder Relay Card	3002120
ARM-8	8 Adder Relay Card	3002125
PRTI-1	Remote Trouble Unit	3002140
UDACT-9100	2-Line Telephone Dialer	3992500
CFG-LCD	Programmer for UDACT	3992505
RJ31X	Phone Jack	1000395
RJ31X Cord	4' Phone Cord	1000396



Conventional Detectors

Model #	Description	Stock #
CO-12/24	12 or 24 Volt Carbon Monoxide Detector with Relays	1430061
PS-24	24 Volt 2-wire Photoelectric Detector	1430011
PS-24H	24 Volt 2-wire Photoelectric Detector with Thermal Sensor	1430012
BPS-2	2-wire Baseless Photo Smoke Detector - Eggshell	1430006
BPS-2W	2-wire Baseless Photo Smoke Detector - White	1430026
BPS-4	4-wire Baseless Photo Smoke Detector - Eggshell	1430007
BPS-4W	4-wire Baseless Photo Smoke Detector - White	1430029
CR-135	Combination Rate of Rise / Fixed Temperature Heat Detector - 135°	1000140
CR-200	Combination Rate of Rise / Fixed Temperature Heat Detector - 200°	1000141
CF-135	Fixed Temperature Heat Detector - 135°	1000142
CF-200	Fixed Temperature Heat Detector - 200°	1000143
CR-135-MP	Weatherproof Combination Heat Detector - 135°	1000137
CR-200-MP	Weatherproof Combination Heat Detector - 200°	1000139
CF-135-MP	Weatherproof Fixed Temperature Heat Detector - 135°	1000136
CF-200-MP	Weatherproof Fixed Temperature Heat Detector - 200°	1000138



Conventional Bases

Model #	Description	Stock #
SB-93	24V, 93mA Draw 6" Smoke Base	1430016
SB-46	24V, 46mA Draw 6" Smoke Base	1430014
SB-81R	24V, 81mA Draw 6" Smoke Base / Relay	1430015
HSC-4R	4-wire 24V, 81mA Draw 6" Smoke Base / Relay	1430013



Beam Detectors

Model #	Description	Stock #
50RU	160' Beam Detector	1430100
100RU	330' Beam Detector	1430110
F5000	Auto Align Beam Detector	1430120
F2000 EEXD	Explosion Proof Beam Detector	1430130



Conventional Fire Pull Stations

Model #	Description	Stock #
P32-1T	SPST, Single Action, Terminal, Hex-Key Reset	1000447
P32-1T-LP	SPST, Dual Action, Terminal, Hex-Key Reset	1000476
P32-1T-KL	SPSY, Single Action, Hex-Key Reset	1000451
P32-1T-LP-KL	DPDT, Dual Action, Key Reset	1000448
RMS-1T-KO	SPST, Single Action, Key Operated (Institutional)	1000450
RMS-2T	DPST, Single Action, Hex-Key Reset	1000477
RMS-6T	DPDT, Single Action, Hex-Key Reset	1000478
RMS-1T-WP	SPST, Single Action, Weatherproof, Hex-Key Reset	1000401
RMS-1T-WP-LP	SPST, Dual Action, Weather Proof, Hex-Key Reset	1000403
RMS-6T-EXP-WP	Explosion Proof / Weatherproof Pull Station	1000400
RMS-6T-EXP-WP-LP	Dual action, Explosion Proof / Weatherproof Pull Station	1000405



Special Application Fire Pull Stations

Model #	Description	Stock #
RMS-1T	Special Application Fire Pull Stations	Options*

*Multiple style and color options available, call for information.



Conventional Duct Detectors & Accessories

Model #	Description	Stock #
DSD-P	Photoelectric Duct Detector	1430009
STS-2.5	2.5 ft. Duct Sampling Tube for DSD-P	1000266
STS-5	5 ft. Sampling Tube (2.5'-5' Duct Width) for DSD-P	1000468
STS-10	10 ft. Sampling Tube (5'-10' Duct Width) for DSD-P	1000263
STN-2.5	2.5 ft. Duct Sampling Tube for DDA	1000274
STN-5	5 ft. Sampling Tube (2.5'-5' Duct Width) for DDA	1000275
STN-10	10 ft. Sampling Tube (5'-10' Duct Width) for DDA	1000276
MS-RA	Remote Alarm LED	1000256
MS-RA/R	Remote Alarm Test/Reset Switch	1000255
MS-KA/R	Remote Alarm and Key Test/Reset Switch	1000254
MS-KA/P/R	Remote Alarm, Pilot, Test/Reset Switch	1000253
MS-RH/KA/P/R	Remote Alarm Horn, Alarm LED, Pilot LED, Key Test/Reset Switch	1000252
MS-RH/KA/P/A/T	Alarm Horn, Alarm LED, Trouble, Pilot, Key Reset	1000251



Explosion Proof Devices

Model #	Description	Stock #
FHEX-24SMR	Explosion Proof Horn	1430500
FSEX-24PMR	Explosion Proof Strobe	1430501
YL-6	Explosion Proof Horn/Strobe	1430510
FSEX-HI	Explosion Proof Strobe High Output	1430502
WMXC	Wall Mount Adapter for FSEX	1430503
CR-135EWT	Explosion Proof Combination RoR/Fixed Temp. 135°	1000148
CR-200EWT	Explosion Proof Combination RoR/Fixed Temp. 200°	1000149
CF-135EWT	Explosion Proof Fixed Temp 135°	1000134
CF-200EWT	Explosion Proof Fixed Temp 200°	1000135
RMS-6T-EXP-WP-LP	Explosion Proof Dual Action Red	1000405
RMS-6T-EXP-WP	Explosion Proof Fire Pull Station Red	1000400
RMS-1T-EXP	Explosion Proof DPDT "MAN DOWN" Pull Station Blue	1000618
RMS-6T-EXP	Explosion Proof DPDT "EMERGENCY" Pull Station Yellow	1000637



Releasing Panels

Model #	Description	Stock #
PFC-6075R	75 Point Addressable Releasing Panel	3006461
PFC-4410RC	Conventional Releasing Panel	3006142



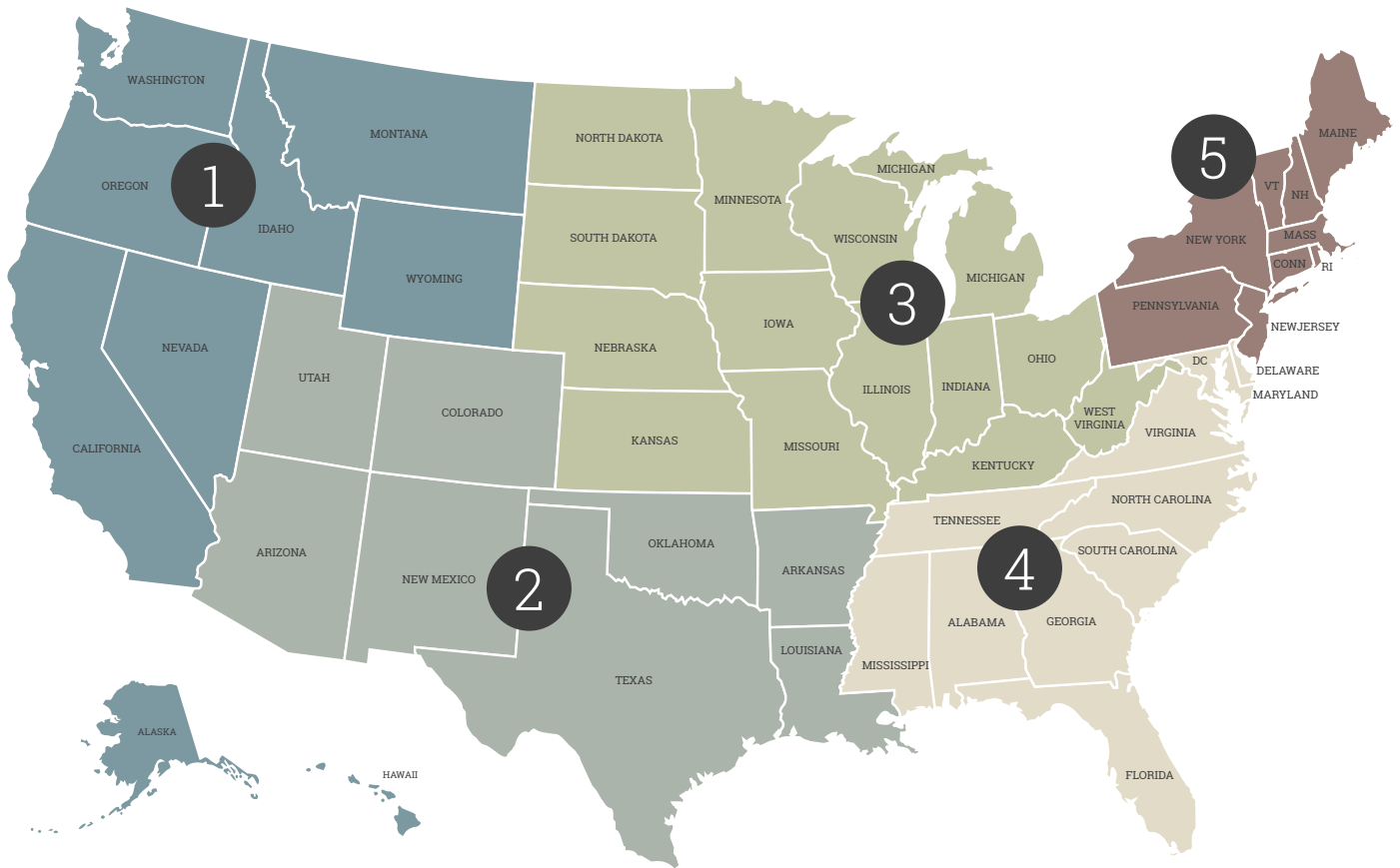
Releasing Remote Annunciators

Model #	Description	Stock #
RA-6500R	160 Character LCD Annunciator with Releasing	3992661
RA-6075R	32 Character LCD Annunciator with Releasing	3006462



Releasing Panel Accessories

Model #	Description	Stock #
Abort Switch	Abort Switch	3001000
RCDS-1	Releasing Circuit Disable Switch	3001002
RA-4410RC	Releasing Panel Remote Annunciator	3006400
ARM-44	8 Form C Relay Board for PFC-4410RC UL/ULC	3006221
ARM-1	4 Pole Relay	3004726
ARM-2	DPDT Relay	3004725
BB-RA-44R	Backbox	3006401
CA2Z	Class A Initiating Device for PFC-4410RC	3006013
CAM	Class A Notification Circuit Module for PFC-4410RC	3005300
BT-40	Battery (12V) 5.0 AH (order 2)	5130092
BT-80	Battery (12V) 8.0 AH (order 2)	5130084
BT-120	Battery (12V) 12.0 AH (order 2)	5130090
BT-180	Battery (12V) 18.0 AH (order 2)	5130086
PFC-TR	Flush Trim Bezel, Red	5090155
EOLR	End of Line Resistor f/ PFC-4410RC	5080593
EOLD	End of Line Diode Assembly f/ PFC-4410RC Release Circuit	3005012
PFC-Key	Key for all Potter Panels (WS-93)	5250075
LOCK	Lock for PFC-4410RC	5250080



1 West/OEM
Mark Sandler
847-254-5108 (Cell)
847-426-3965 (Fax)
msandler@pottersignal.com

2 Southwest
Gene Reed
817-475-8895 (Cell)
314-595-6999 (Fax)
gener@pottersignal.com

3 Midwest
Matt Lears
314-409-7731 (Cell)
314-595-6999 (Fax)
mattl@pottersignal.com

4 Southeast
Pat Hudgins
704-526-6890 (Cell)
704-567-7377 (Fax)
path@pottersignal.com

5 Northeast
Kevin Magoon
860-348-6419 (Cell)
314-595-6999 (Fax)
kevinm@pottersignal.com

National Sales Manager

Craig Summers
509-944-1380 (Cell)
800-768-8377 (Fax)
craigs@pottersignal.com

Customer Support

Tech Support
866-956-1211
tech@pottersignal.com
Customer Service
866-240-1870
orders@pottersignal.com



PFC-6000 Series Fire Panels

Potter's addressable fire systems use state-of-the-art addressable sensors and control modules which utilize the robust Nohmi protocol to provide you the flexibility needed to tackle demanding applications. All of Potter's new addressable fire systems use the same devices to ensure a clear migration path as your systems grow in size and scope. In addition to our full line of addressable devices, we've designed all of our audio visual devices for both ease of installation and robust functionality. Our efficient output devices allow you to take full advantage of the multiple NAC's available on each fire panel.



PFC-6800

127 up to 1,016 Points¹
6 NACs / 196²
10A Power / 320²
4 I/O Circuits
160 Character LCD



PFC-6200

127 up to 254 Points¹
2 NACs / 190²
5A Power / 315²
2 I/O Circuits
160 Character LCD



PFC-6075

75 Points
2 NACs / 190²
5A Power / 315²
2 I/O Circuits
32 Character LCD



PFC-6030

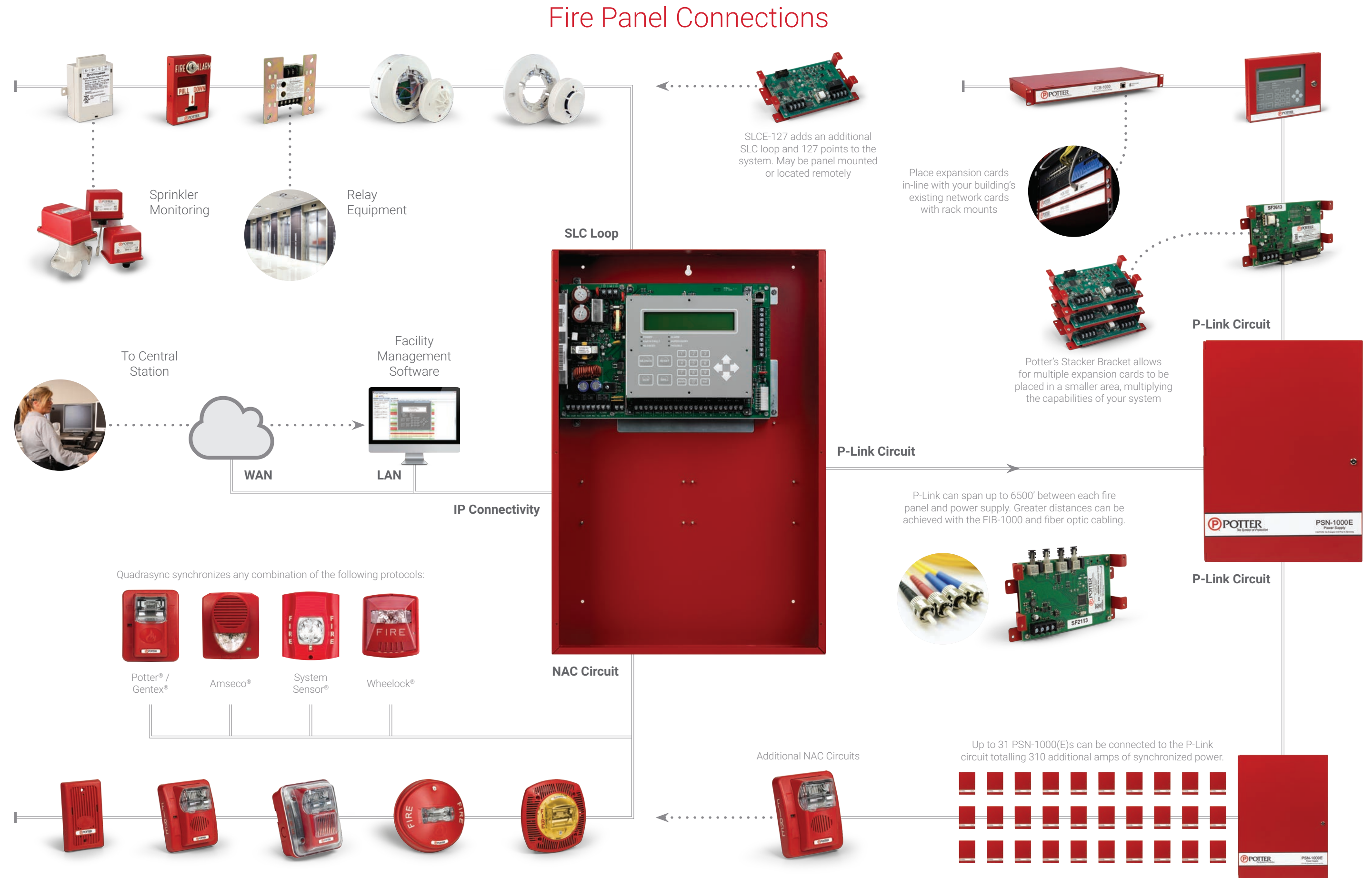
30 Points
2 NACs / 188²
3.5A Power / 313.5²
-
32 Character LCD

All PFC-6000 Series addressable fire alarm control panels include a built-in UL Listed sole path IP communicator for communication to primary central station.

¹ With the addition of SLCE-127 expansion cards. PFC-6800 supports 7 total cards, PFC-6200 supports 1.

² Capacity with maximum of 31 PSN-1000(E) Intelligent Power Supplies.

Fire Panel Connection Diagram



At Potter Electric Signal Company, LLC,

QUALITY is the first order of business. Since 1898, we have served the security and Fire Sprinkler industries on a world-wide basis. Today, we manufacture a full line of sprinkler monitoring devices, fire alarm panels, releasing control panels, vault, safe, and security systems and peripherals.

We strive to provide you with the finest products and technical support in the industry. You will also receive prompt service from a dedicated team of professionals. After all, you, the customer, are the most important member of our team.

So give us a call.



Potter Electric Signal Company, LLC
5757 Phantom Drive, Suite 125
St. Louis, MO 63042

Office Hours:
Monday - Friday
8:00 am - 5:00 pm, CST

☎ 800-325-3936

✉ sales@pottersignal.com

🌐 www.pottersignal.com